

Vedr.: Mini Crosser M2 og X2 - Beskyttelse mod EMC-støj	PUP nr.:	20-001
	Udarbejdet af:	LPA
	Dato:	07-01-2020
	Intern <input type="checkbox"/>	Ekstern <input checked="" type="checkbox"/>

Alle Mini Crosser M2 og X2 modeller bliver fra nu af udstyret med en Spændingsudligner, for at modvirke påvirkning af elektronisk støj fra andet elektronisk udstyr.

Medema A/S



Spændingsudligner M2/X2

Varenummer: 1505-1545

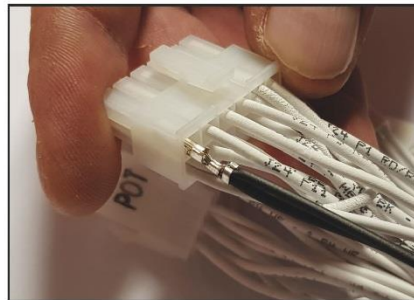


Spændingsudligner skal beskytte printet mod spændingsudsving, som kan forårsage fejl på printet.

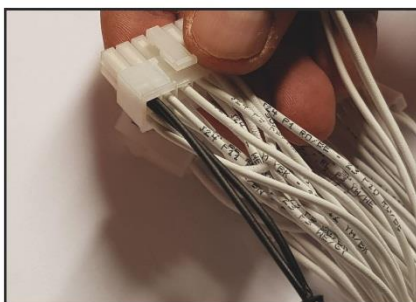
Sådan modtager man et nyt hoved til M2/X2. Klar til at montere på hovedkablets J24 stik - pin 12.



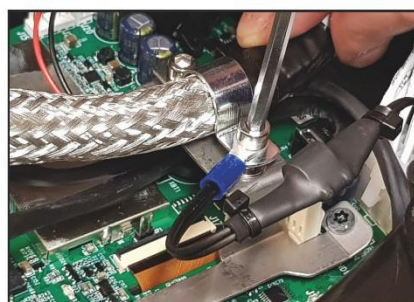
Stik J24 fra hovedstikket.



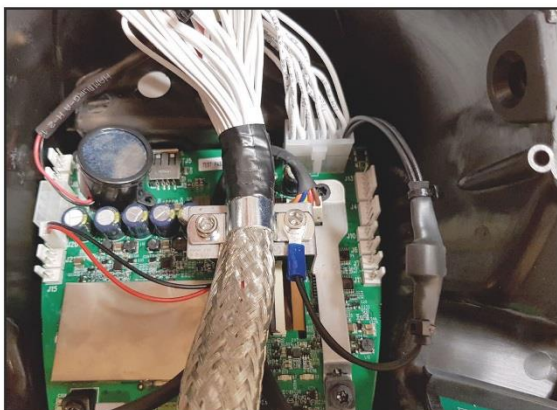
Montér spændingsudligner i pin 12



Spændingsudligner monteret.



Øjet placeres imellem skruen og bøjlen som holder hovedkablet fast. Spændes til.



Færdig monteret.

Efter ombytning af hovedet, testes alle funktioner.



Klaus Smedegaard
R & D Manager



Regarding: Mini Crosser M2 and X2 – Protection against EMC-noise	PUP No.:	20-001
	Prepared by:	LPA
	Date:	07-01-2020
	Internal <input type="checkbox"/>	External <input type="checkbox"/>

All Mini Crosser M2 and X2 models will from now on be equipped with a Voltage equalizer to counteract the influence of electronic noise from other electronic equipment.

Medema A/S



Voltage equalizer M2/X2

Article No: 1505-1545

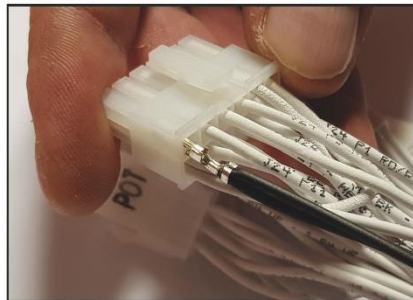


The voltage equalizer protect the print from voltage fluctuations which may cause print failure.

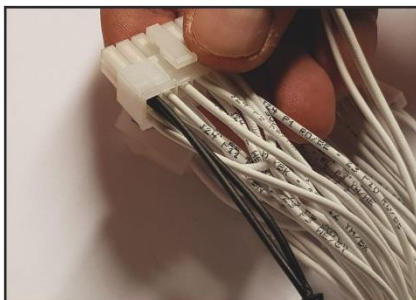
When you receive a new head for M2/X2 it looks like this. Ready to connect to the main cable J24 plug - pin 12.



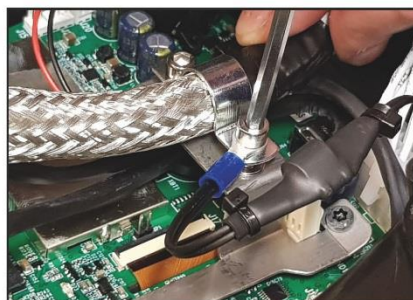
Plug J24 from the main cable.



Connect the voltage equalizer in pin 12

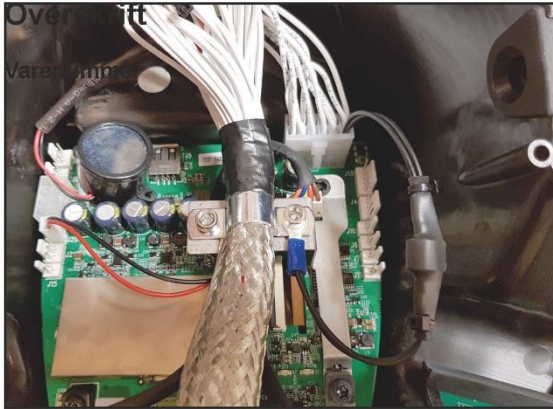


voltage equalizer mounted.



Place the "Eye" between the screw and the bracket that keeps the main cable fixed. Tighten.





Mounted.

When the new head is mounted, test all functions.



Klaus Smedegaard
R & D Manager

