

ASSEMBLY INSTRUCTIONS

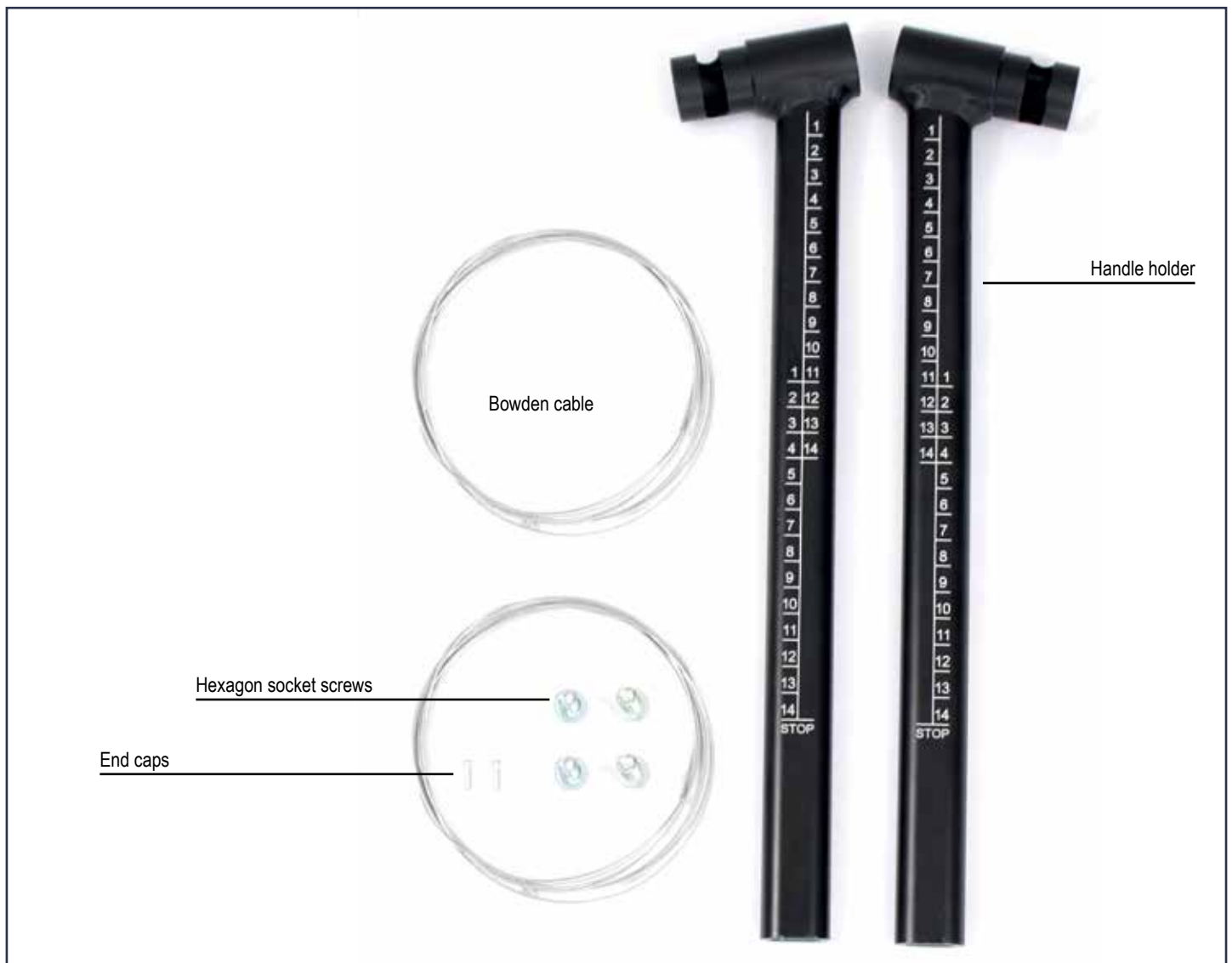
Handle holder replacement: MALTE (size 2-4) / MALTE Outdoor (size 2+3) / MARCY (size 2+3)

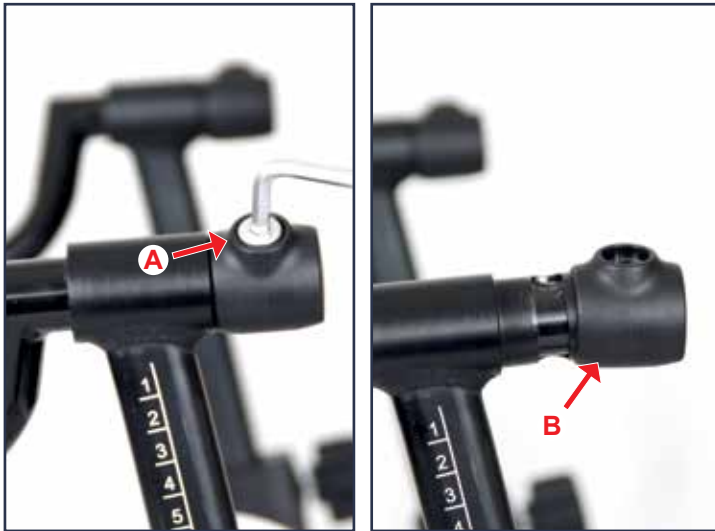


Status: 04.2018

Contents

Assembly instructions MALTE	3
Assembly instructions MARCY	4
Assembly instructions MALTE with parking brake	5-9
Assembly instructions MALTE Outdoor	10-11





MALTE

Step 1: Release the hexagon socket screw (A) with a 5 mm Allen key at the top of the handle holder and then remove the cover cap (B).



Step 2: Remove the clip (C) out of the handle tube, pull the handle tube out of the handle holder and take it out of the mount.



Step 3: Now slide the handle tube (D) into the new handle holder (E), push the clip (C) back into the handle tube (D) and then slide the cover cap (F) back on. Now take the supplied the hexagon socket screw (long) and tighten it.

Now the handle tube (E) can be pushed back into the mount on MALTE.

Please carry out these assembly steps on both handle tubes.



MARCY

Step 1: Release the hexagon socket screw (A) with a 5 mm Allen key at the top of the handle holder and then remove the cover cap (B).



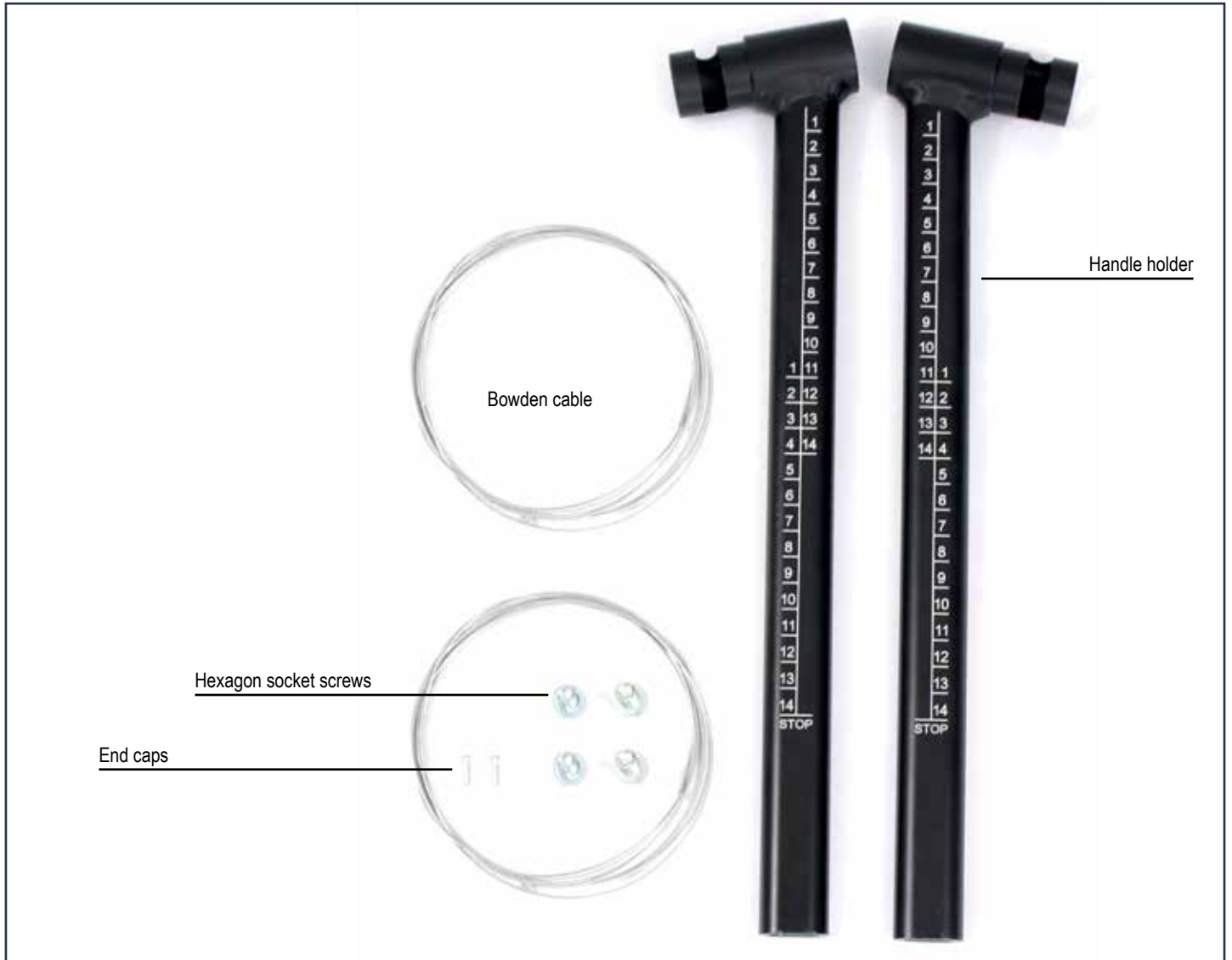
Step 2: Remove the clip (C) out of the handle tube, pull the handle tube out of the handle holder and take it out of the mount.

Now slide the handle tube into the new handle holder, push the clip (C) back into the handle tube (D) and then slide the cover cap (B) back on. Now take the supplied the hexagon socket screw (long) and tighten it.

Now the handle tube (E) can be pushed back into the mount on MARCY.

Please carry out these assembly steps on both handle tubes.

Replacement can be undertaken for the MARCY with parking brake precisely as described here.



MALTE with parking brake

Step 1: Release the clamp screw (A) at the bottom of the Bowden cable with a 3 mm Allen key.



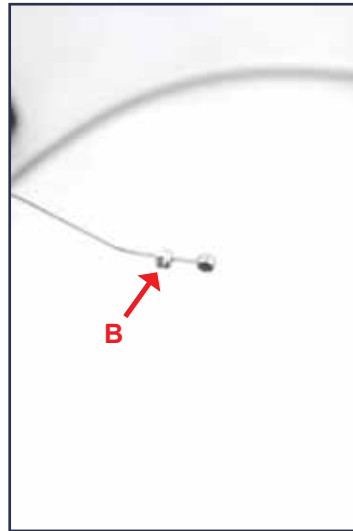
Step 2: Now remove the protective cap (A) on the brake anchor, release the clamp nipple (B) with a 2 mm Allen key and remove the clamp nipple (B). Take the Bowden cable out to the back.



Step 3: Now release the hexagon socket screw (C) with a 5 mm Allen key at the top of the handle holder and then remove the cover cap (D).



Step 4: Remove the clip (E) out of the handle tube (F) and pull the handle tube (F) out of the handle holder (G).



Step 5: Pull the Bowden cable (A) out of the brake handle. Then take the nut (B) off the Bowden cable and pull it onto the new Bowden cable supplied.

Tip: Cut a little off the end of the Bowden cable before pulling it out so it can be easily pulled through the outer sleeve.



Step 6: Now guide the new Bowden cable through the brake handle (C) then slide this back into the outer sleeve (D).



Step 7: Then pull the Bowden cable through the mount on the new handle holder (E) then also insert the entire handle tube (F).



Step 8: Now pull the cover cap (A) back onto the Bowden cable and slide the clip (B) into the handle tube.

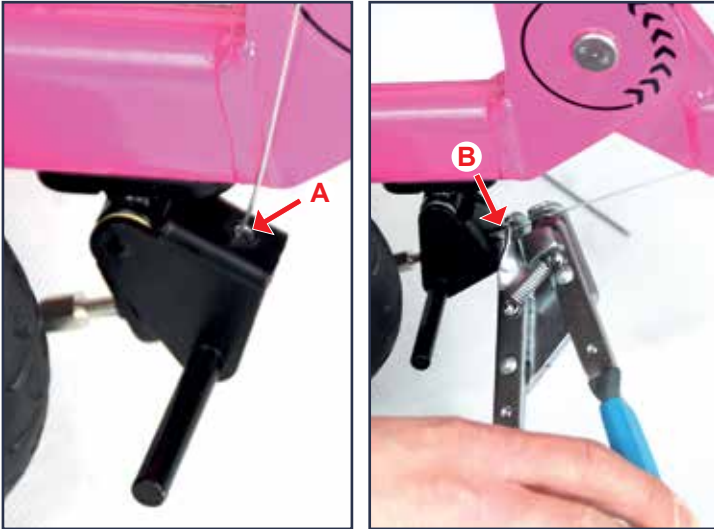


Step 9: Now slide the cover cap back onto the handle pipe, take one of the supplied hexagon socket screws (short) and tighten it with a 5 mm Allen key.

Now you can remove the old handle holder on the MALTE (remove the pelvis pad beforehand if necessary) and then slide the new handle holder into the frame.



Step 10: Now you can slide the Bowden cable back through the brake (D) at the bottom and pull spring (E) onto the Bowden cable.



Step 11: Now guide the Bowden cable through the brake anchor (A), then slide the clamp nipple (B) onto the Bowden cable and push it into the brake anchor. Then tighten the Bowden cable with a collet and re-tighten the clamp nipple (B) with a 2 mm Allen key.

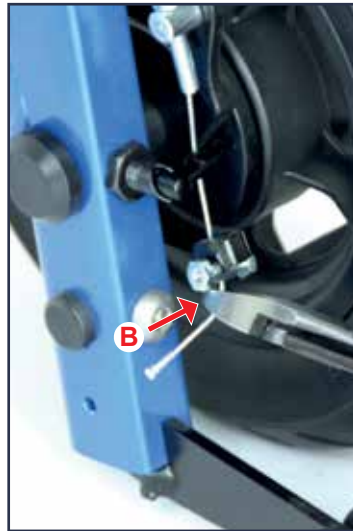
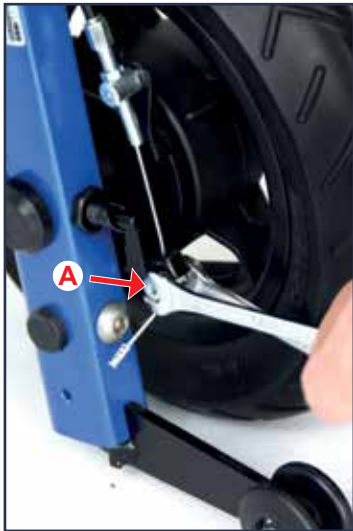


Step 12: Now shorten the Bowden cable with a string cutter (C) and then put the protective cap (D) back onto the clamp nipple.



Step 13: To finish, please tighten the clamp clip (E) for the Bowden cable again with a 3 mm Allen key.

Please carry out these assembly steps on both handle tubes.



MALTE Outdoor

Step 1: Release the clamp screw (A) at the bottom of the drum brake with two combination wrenches (8+9 mm).

Then cut a little off the end of the Bowden cable with a string cutter, remove the clamp screw (A) and keep it safe.

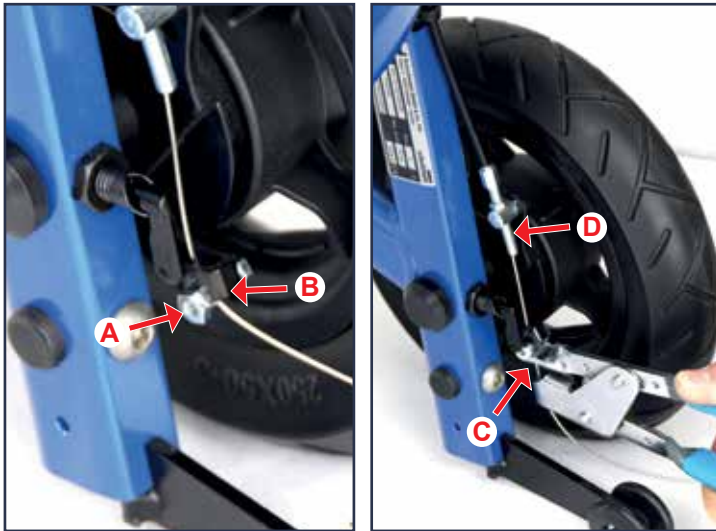


Step 2: Now pull the Bowden cable out of the guide (C) on the base frame.

Now please proceed as previously described for the MALTE with parking brake under steps 3-9.



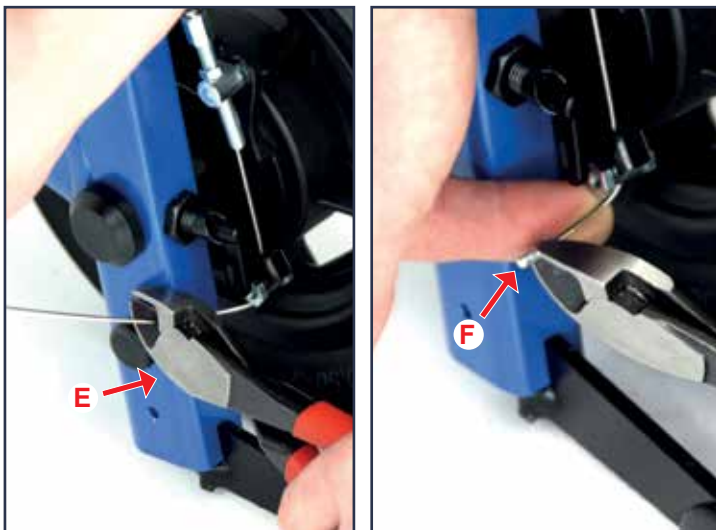
Step 10: Push the Bowden cable back into the outer sleeve and slide the Bowden cable through the drum brake adjuster (D).



Step 11: Pull the clamp screw (A) back onto the Bowden cable and slide it up to the bar (B).

Then tighten the Bowden cable with a collet (C) and then re-tighten the clamp screw (A) with a 8 mm combination wrench (counter with a 9 mm combination wrench if necessary).

Before tightening the Bowden cable, make sure that the adjustment screw (D) is positioned centrally so that a fine adjustment of the brake can be carried out after tightening.



Step 12: Pull the Bowden cable onto the frame and cut the Bowden cable with a string cutter (E).

Now also slide the supplied end cap (F) onto the end of the Bowden cable and lightly press it together with a string cutter.

Please carry out these assembly steps on both handle tubes.

Please feel free to contact us at any time if you have further questions. Our field and office staff have been designated as your contact persons. Please contact Mr. Torsten Schuchmann to coordinate the replacement process:

- Tel.: 05405/909-0
- or per eMail: QM@schuchmann-reha.de.



STATUS 04/2018

- Seating aids
- Riding aids
- Mobility and therapy aids
- Bathing and hygiene aids
- Corrective aids
- Sale of products by renowned manufacturers
- Individual manufacture and adaptation
- New and further development

Schuchmann GmbH & Co. KG

Dütestraße 3 · 49205 Hasbergen
Tel. 0 54 05 909-0 · Fax 0 54 05 909-109
www.schuchmann-reha.de



www.facebook.com/schuchmannreha

 **schuchmann**®